



City of Trenton

Assunpink Creek Park

Amtico Square to 104 Taylor Street

Public Mtg. #2

January 31, 2024



Community Planning Landscape Architecture



Park Location Map

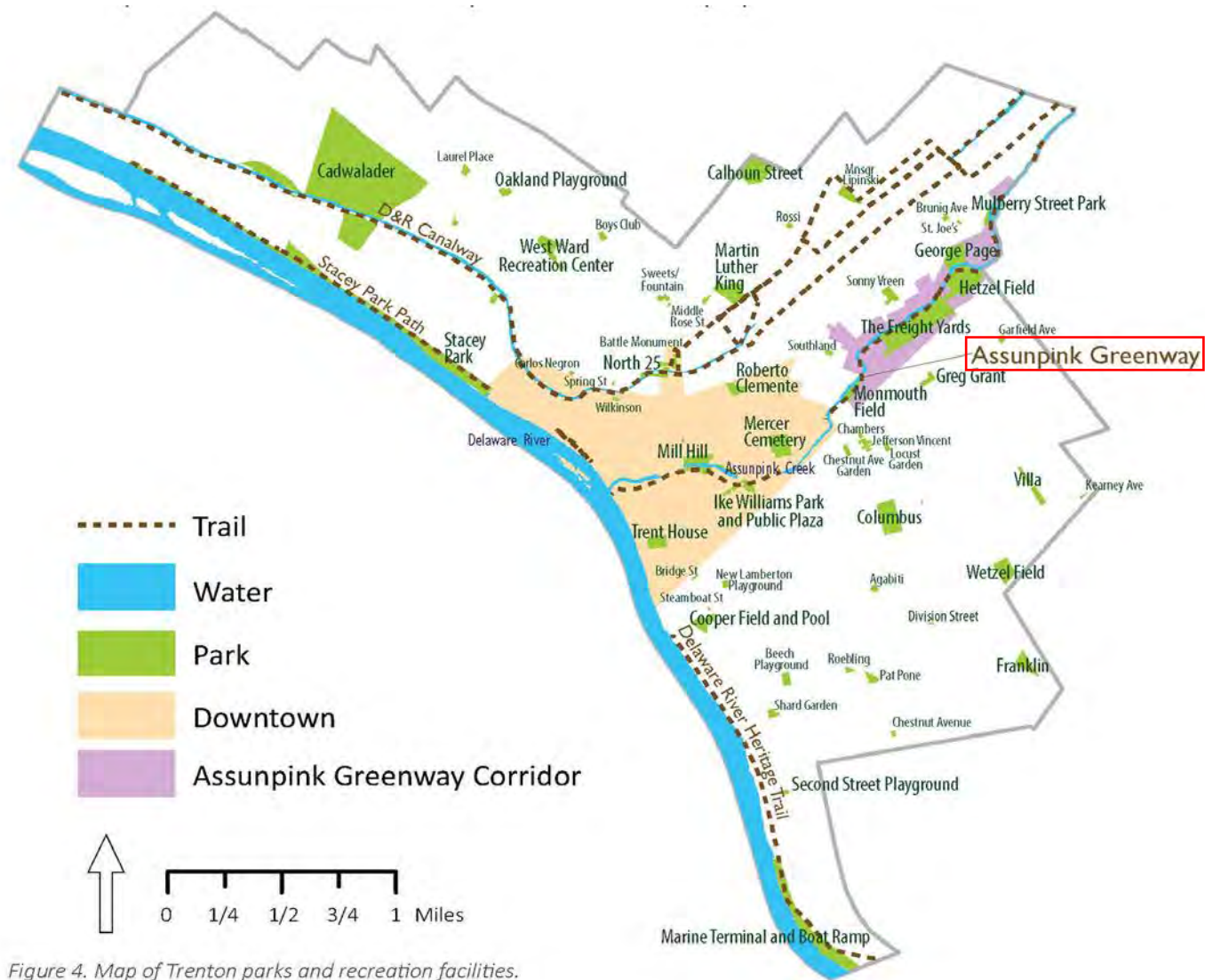
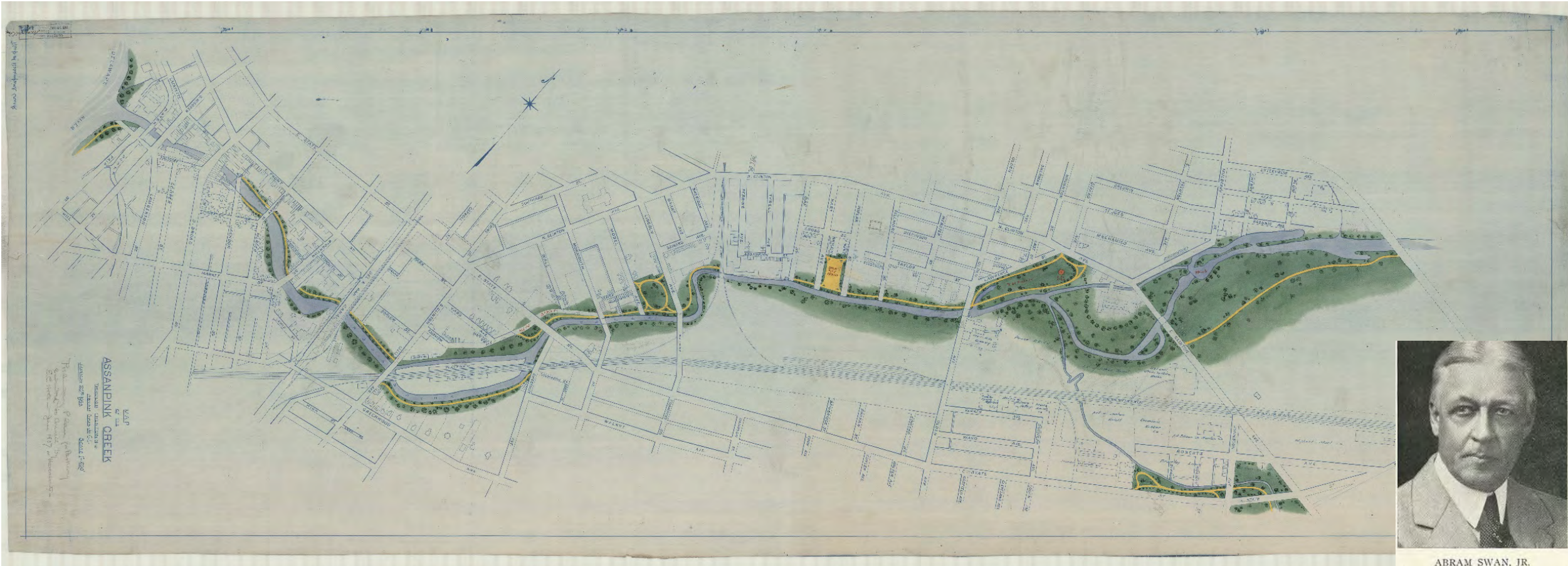


Figure 4. Map of Trenton parks and recreation facilities.

1904- Abram Swan Jr. C.E.: “Assanpink” Creek Park Plan



ABRAM SWAN, JR.

1907- Olmsted Brothers Plan: “Assanpink” Creek Park Plan



Hetzel Field Aerial c. 1925



2009-Cassway/Albert- Updated 2000 Master Plan



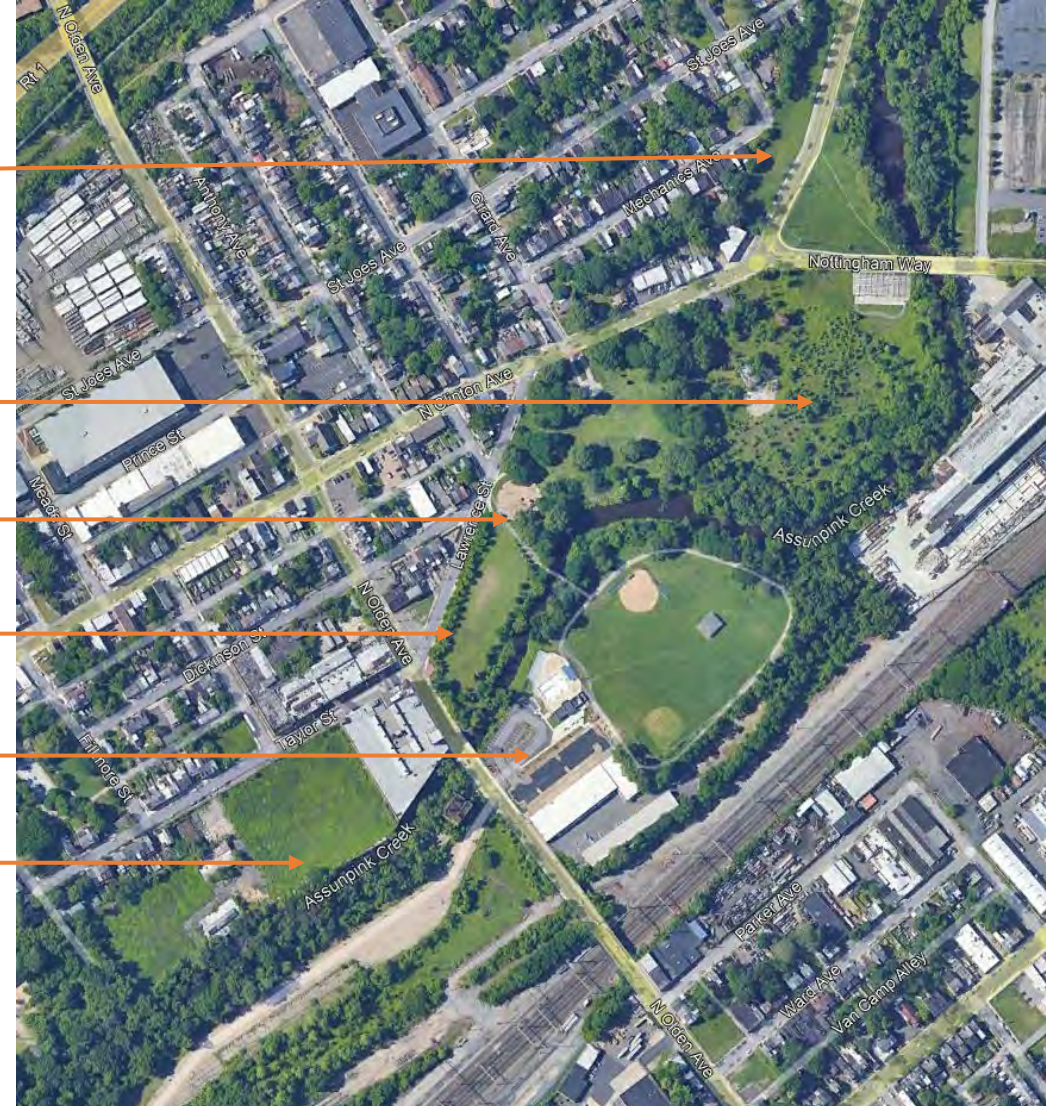
Portion of Assunpink Greenway Immediately Upstream from Project Sites - prior to demo

- Mulberry Street Homes (demo about 2004)
- Clinton Commerce Center, Storcella, Scarpatti (demo 2010)
- Crescent Wire (demo 2007)
- Taylor Street (demo 2018)



Same portion of the Assunpink Greenway today!

- Mulberry Street Homes (demo about 2004)
- Clinton Commerce Center, Storcella, Scarpatti (demo 2010)
- George Page Park Playground (2013)
- Crescent Wire (demo 2007)
- Hetzel Pool Reconstruction (2020)
- Taylor Street (demo 2018)



Parcel Maps

Locust Hill Cemetery

Amtico

104 Taylor

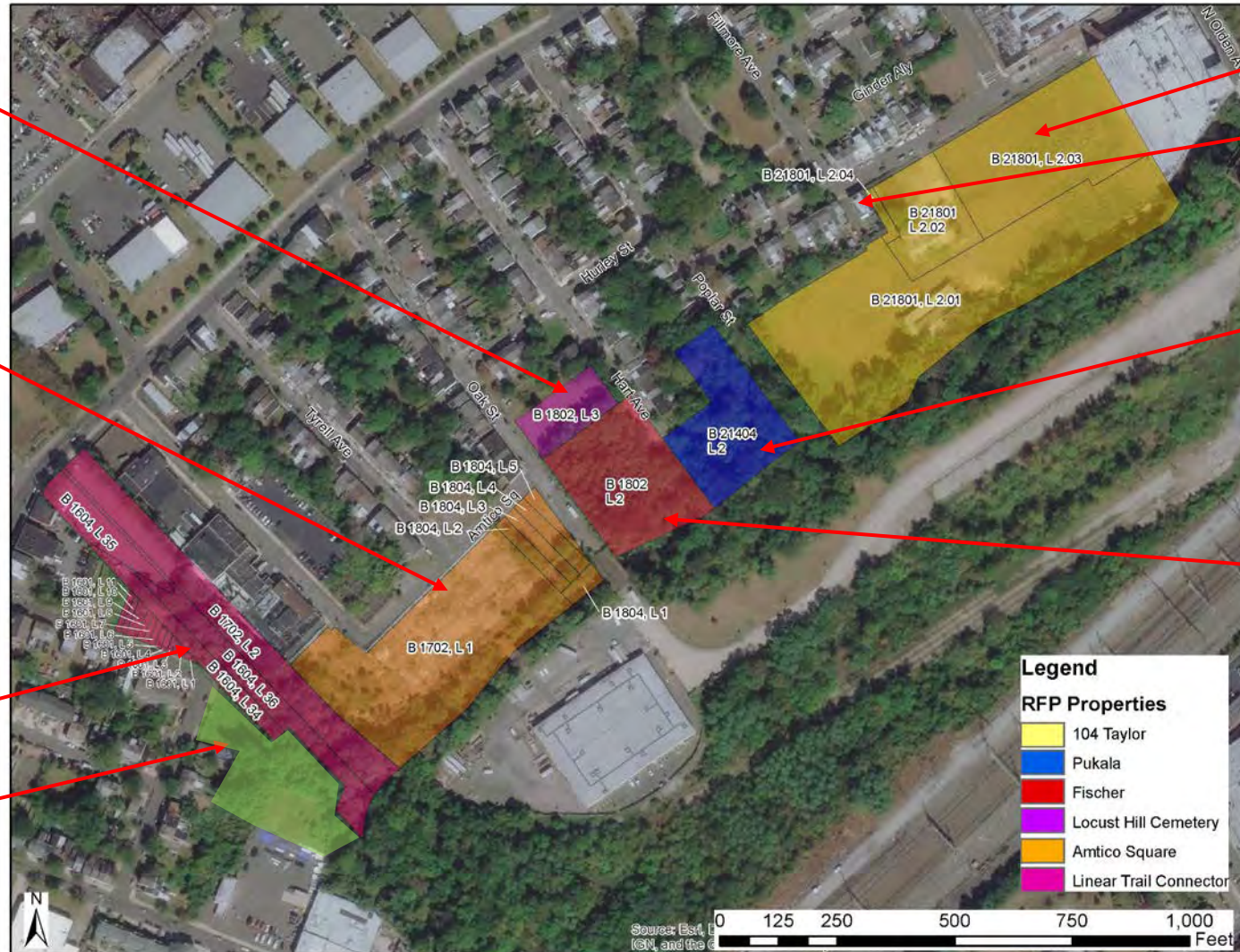
The Garvey School

Pukala

Fischer

Linear Trail Connector

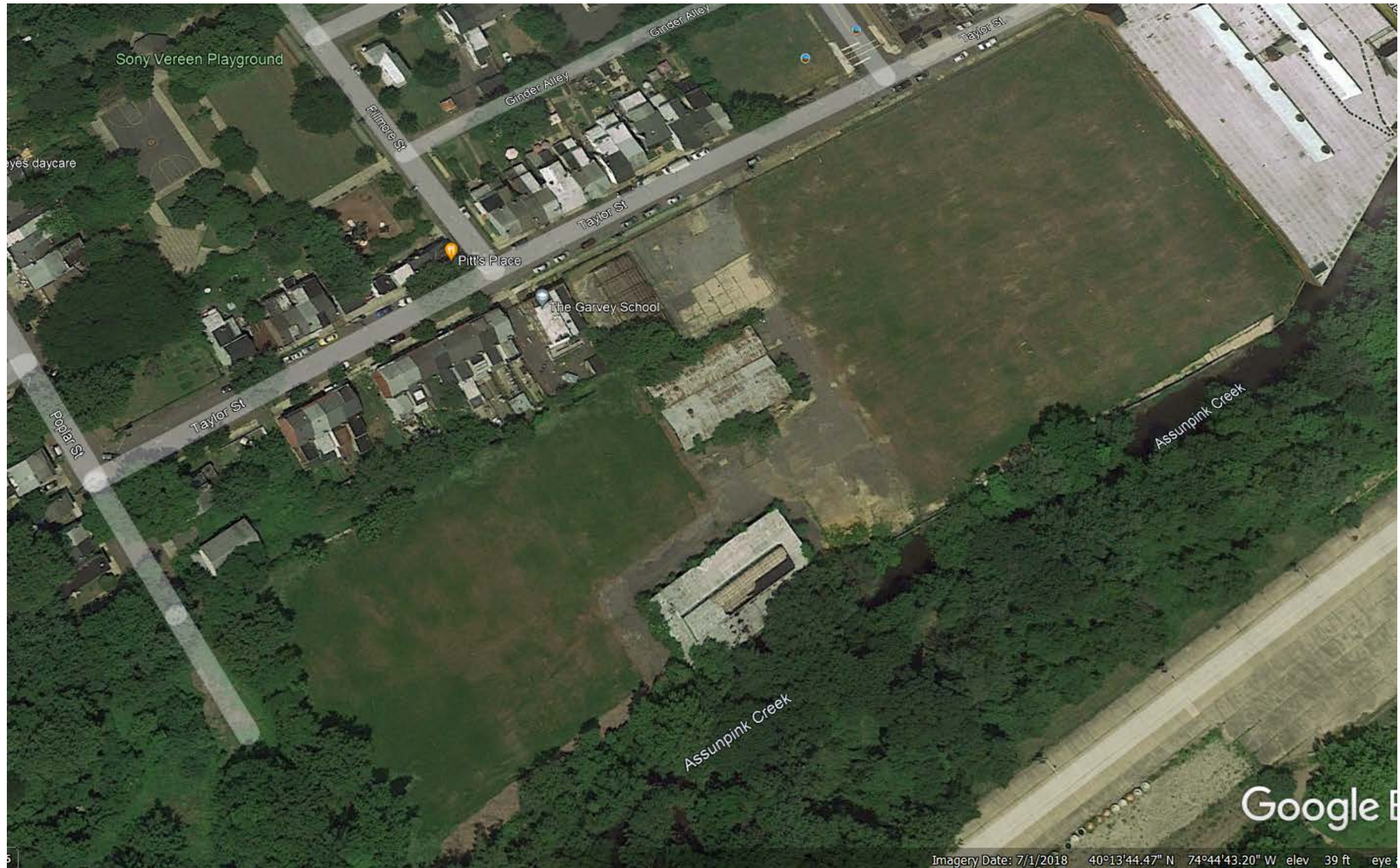
Lincoln Supply
(subdivision)



104 Taylor – prior to demolition 2016



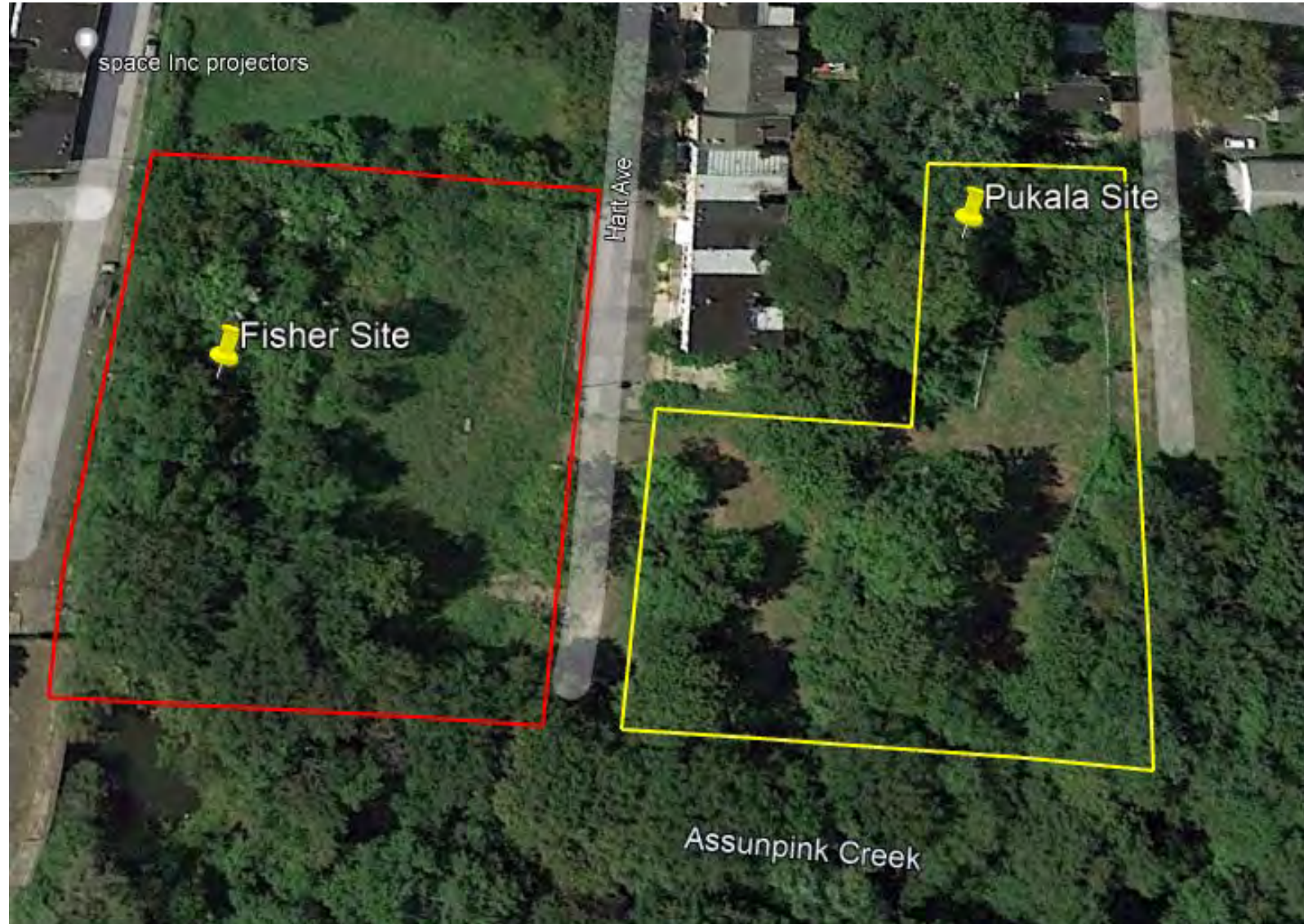
104 Taylor post demolition 2018



Fischer and Pukala Sites – prior to demolition 2012



Fischer and Pukala Sites post demolition 2013



Amtico Square – prior to demolition 2010



Amtico Square demo in progress 2013



Amtico Square present day



City of Trenton

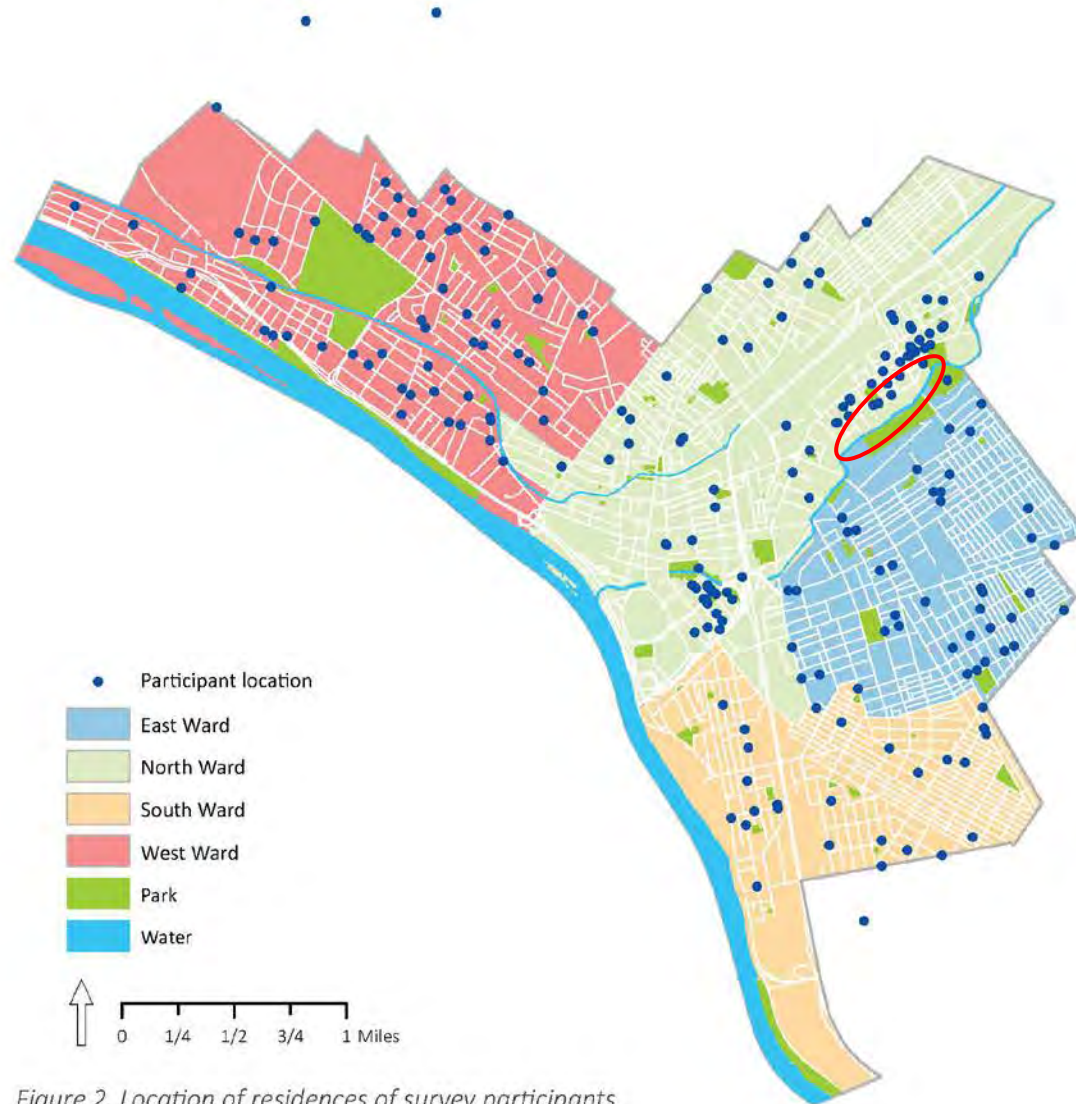
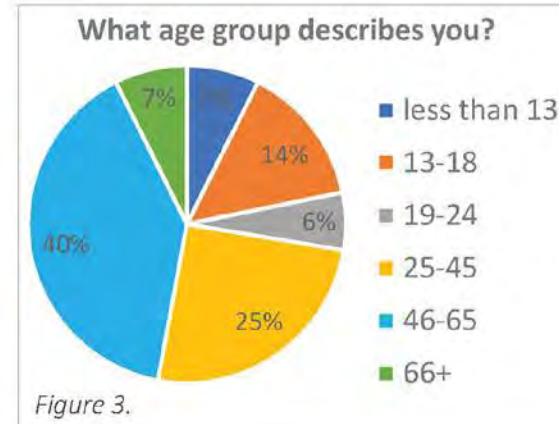


Figure 2. Location of residences of survey participants.



Approximately 20 percent of the survey respondents are under 18 years of age, and 65 percent are between 25 and 65 years of age.

Compared with Trenton's population, survey participants under 13 and ages 25-45 are under-represented, survey participants ages 13-18 and ages 46-65 are over-represented, and survey participants ages 19-24 and 66 or older are nearly the same.[1]

[1] Comparisons were made using the U.S. Census Bureau's 2012-2016 American Community Survey 5-Year Estimates. Comparisons are approximate because U.S. Census Bureau and survey age categories do not match exactly.

Trenton Recreation Needs Assessment



Trenton Recreation Needs Assessment

Trenton, New Jersey

April 2019

Findings

Most Needed Recreation Facilities

Survey participants chose from 25 recreation facility options most needed in Trenton. Choices ranged from various types of sports fields and facilities to swimming pools, exercise stations and natural areas. Respondents could select up to five.

Most frequently selected options included: swimming pools, basketball courts, trails, playgrounds, general use fields, soccer fields, exercise stations, waterfront park and skate park. Other options were selected by between 10 and 60 participants.

Survey responses by age group suggest results overall are similar, however swimming pools were not selected as frequently by 19-24 and 25-45 age groups as other age groups. Basketball courts were mentioned less frequently for participants ages less than 13 or 66 or older compared with other age groups.

- 38% of respondents selected swimming pools and basketball courts
- 37% of respondents selected trails
- 35% of respondents selected playgrounds
- 33% of respondents selected general use fields
- 32% of respondents selected soccer fields
- 31% of respondents selected exercise stations and waterfront park

What recreational facilities do you think are the most needed in Trenton?

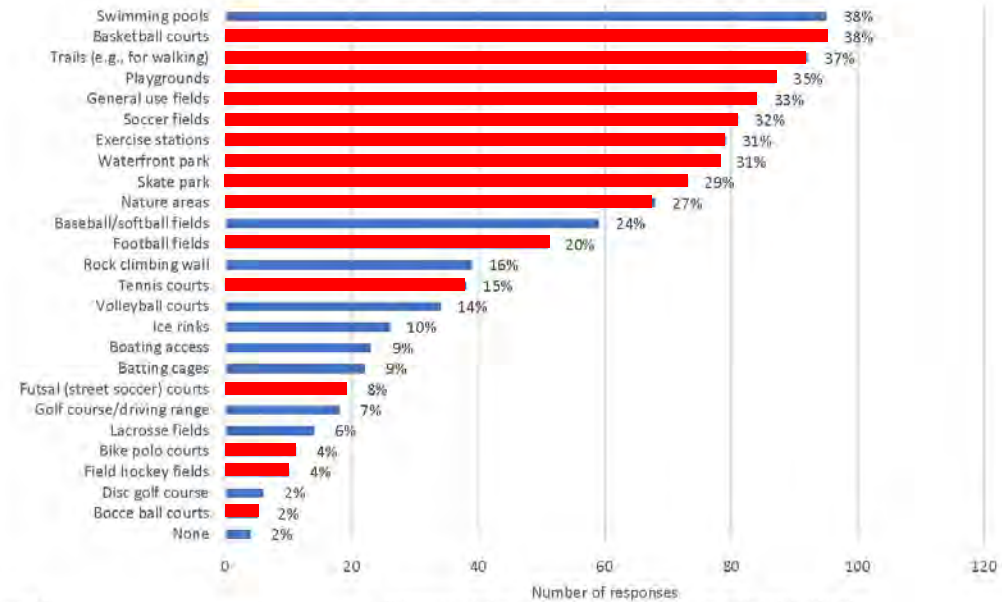


Figure 16.

(Total percentages above exceed 100 because more than one option could be selected.)

Trenton Recreation Needs Assessment



Trenton Recreation Needs Assessment

Trenton, New Jersey

April 2019

Findings

Facility Features

Lack of restrooms or poorly maintained restroom facilities is a critical need for Trenton's parks and recreation facilities, especially for larger parks and heavily used outdoor recreation facilities.

Trenton's parks serve as gathering places for significant community events, attracting residents to festivals, tournaments, games and neighborhood cookouts. Discussions and survey results among leisure users identified the need for additional restrooms, seating and features for gatherings (grills, picnic areas, pavilions). For sports recreation users, features that support staff, volunteers, participants and families during games and practices are high priorities. These include nearby restrooms, functional concession stands, field houses, equipment storage and bleachers in good condition.

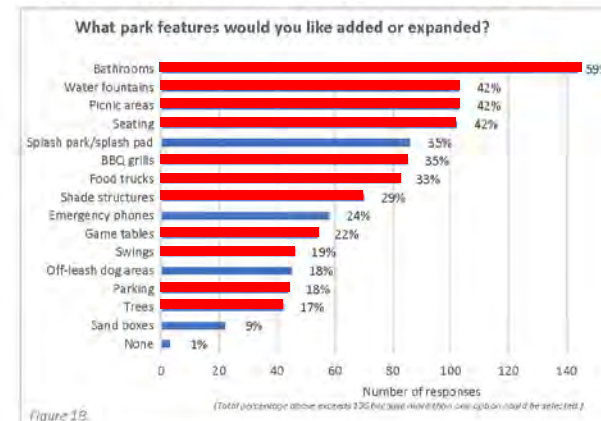
Proximity to working restrooms has been consistently raised as an issue for both general users of recreation facilities and organized sports participants, particularly at larger parks such as Cadwalader and George Page. During instructional programs such as summer basketball clinics at Cadwalader Park, staff members must escort children to distant restrooms to ensure the children's safety, detracting from hands-on program quality and attentiveness. The distance between picnicking facilities at George Page Park and the restrooms at Hetzel Field creates challenges for visitors, who want to use the space for relaxing and gathering. Stakeholders indicate restrooms are needed in close proximity to where activities such as league play, community events, and instructional programs attract many visitors for extended periods of time.

Most Needed Features

Across all survey responses, the park feature most frequently selected by survey participant to be added was bathrooms. Over half of all survey participants selected this option. Other frequently selected park features participants selected include water fountains, picnic areas, seating, splash park/splash pad, barbecue grills, food trucks and shade structures. Survey responses by ward indicate again that bathrooms was the most common feature selected within each ward. Similarly, survey results by age indicate that across every age group, bathrooms were the most consistently selected park feature that should be added. Survey responses by ward location and age are presented in the Appendix.

Facility Features Needed

- Install more restrooms in parks across the city, particularly in close proximity to gathering areas and sports facilities.
- Install more infrastructure to support gathering and event spaces (shaded tables, pavilions, seating) that are easy to walk to from park entrance areas.
- Renovate field houses, concession stands and bleachers in facilities where leagues are active to provide safe places for players, coaches and volunteers participating in leagues.
- Include equipment storage, concession stands, seating and restrooms for new active recreation facilities that cater to leagues and competitive events.



- 59% of respondents selected bathrooms
- 42% of respondents selected water fountains, picnic areas and seating
- 35% of respondents selected splash pad/splash park and BBQ grills
- 33% of respondents selected food trucks

"Our volunteers, parents and players have pitched in and contributed blood, sweat, tears, and even dollars to make upgrades to facilities that the City owns."

A Little League President

Trenton Recreation Needs Assessment



Trenton Recreation Needs Assessment

Trenton, New Jersey

April 2019

Findings

Within this framework, representatives from community recreation organizations met to compile and share information about recreation and education opportunities available across the city. The group also coordinated events such as tournaments that brought together youth from different parts of Trenton. Participating organizations found the coalition valuable for planning, cross-marketing and engagement, and have suggested a similar model would help create a comprehensive, up-to-date picture of recreation offerings to expand opportunities and transportation for youth to participate in a wider variety of programs.

Partner Models

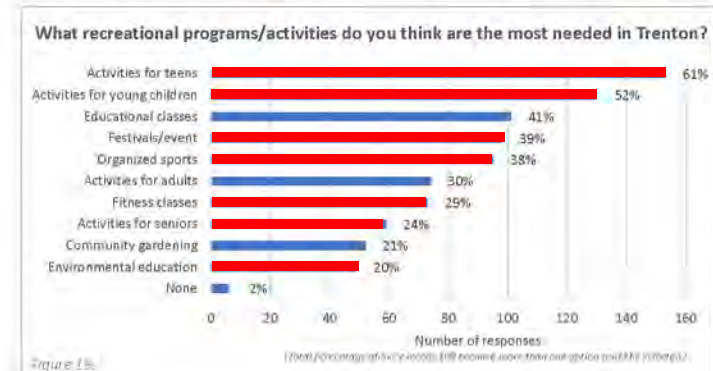
Many models exist for establishing productive profitable relationships between municipalities and community organizations that enable these organizations to deliver high quality programs as part of a city's parks and recreation offerings. Models can help set standards of excellence, facilitate revenue sharing and efficiently align resources with needs and timing. Stakeholders agree the City should explore new partner models for program providers so the City can better support organizations that have expertise and a record of successfully delivering programs. The City should also consider upgrading community center facilities to provide spaces to support the programs and providers.

Most Needed Programs

Survey participants chose from 10 recreation programs or activities most needed in Trenton. Choices ranged from organized sports and education opportunities such as art classes to general activities for young children, teens, adults and seniors. Participants could select up to three options. The most frequently selected program or activity was activities for teens followed by activities for youth, educational classes, festivals/events, organized sports, activities for adults, and fitness classes (e.g., Zumba, yoga, boot camps, swimming, etc.). Activities for seniors, community gardening and environmental education also received several mentions.

Across all four wards, activities for teens was the most frequently selected option. Activities for young children was the second most frequently selected option across all wards, with the exception of South Ward participants which had equal numbers of responses for both activities for young children and festivals/event as the second most frequently selected option.

The most frequently selected options by age group were slightly more varied, however, activities for young children and activities for teens were still among the top five most frequently selected options across all age groups. Given the extensive interest in activities for young children and teens, it useful to note which programs/activities survey participants in these age groups most frequently selected. For survey participants less than 13, these include: activities for young children; educational classes which could include art, dance, martial arts, etc.; activities for teens; fitness classes which could include Zumba, yoga, boot camps, swimming, etc.; and organized sports. For survey participants ages 13-18, these include: activities for teens, organized sports, festivals/event, activities for young children, and education classes.



- 61% of respondents selected activities for teens
- 52% of respondents selected activities for young children
- 41% of respondents selected educational classes
- 39% of respondents selected festivals/events
- 38% of respondents selected organized sports
- 30% of respondents selected activities for adults

East Trenton-Brownfields Area-Wide Plan



104 Taylor Conceptual Rendering (previously prepared)



FROM 2020

104 Taylor – Concept Rendering (previously prepared)



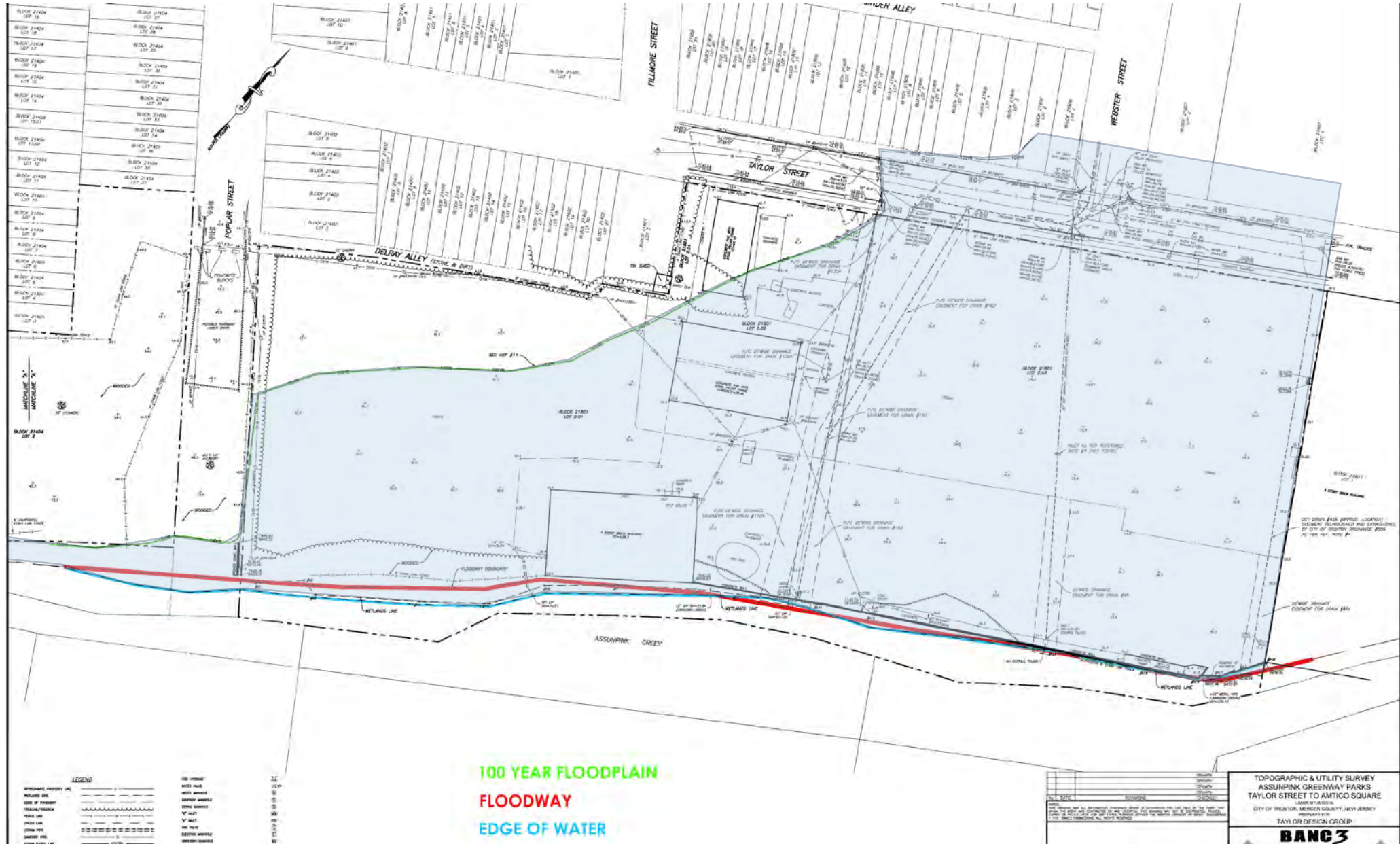
Amtico Square Conceptual Rendering (previously prepared)



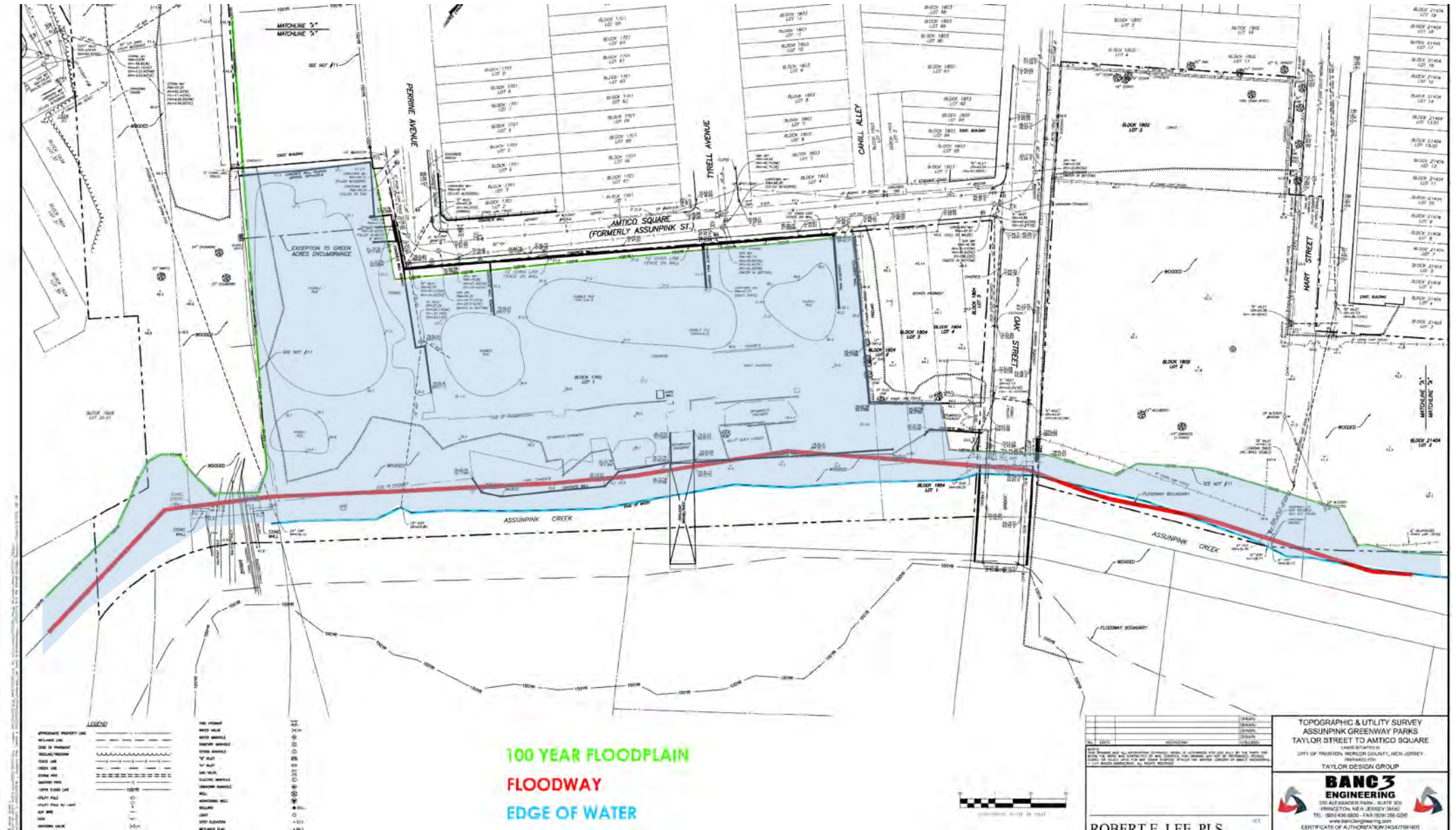
Amtico Square Conceptual Rendering (previously prepared)



104 Taylor Street Survey and Environmental Constraints



Amtico Square, Fisher & Locust Hill Cemetery Survey and Environmental Constraints



Flooding- 104 Taylor Street 1



Parcel Maps and Preliminary Environmental Review

Additional testing/investigation required

Locust Hill Cemetery

Additional sampling required
1' of capping with demarcation barrier,
topsoil and cap anticipated

Amtico

8 AOCs for exceedances for Impact to GW
No exceedances for Site Remediation
standards
No capping or removal currently anticipated

Linear Trail Connector

Lincoln Supply (subdivision)

104 Taylor

9 Remaining AOCs for exceedances for
remediation or investigation

No capping currently anticipated

Pukala

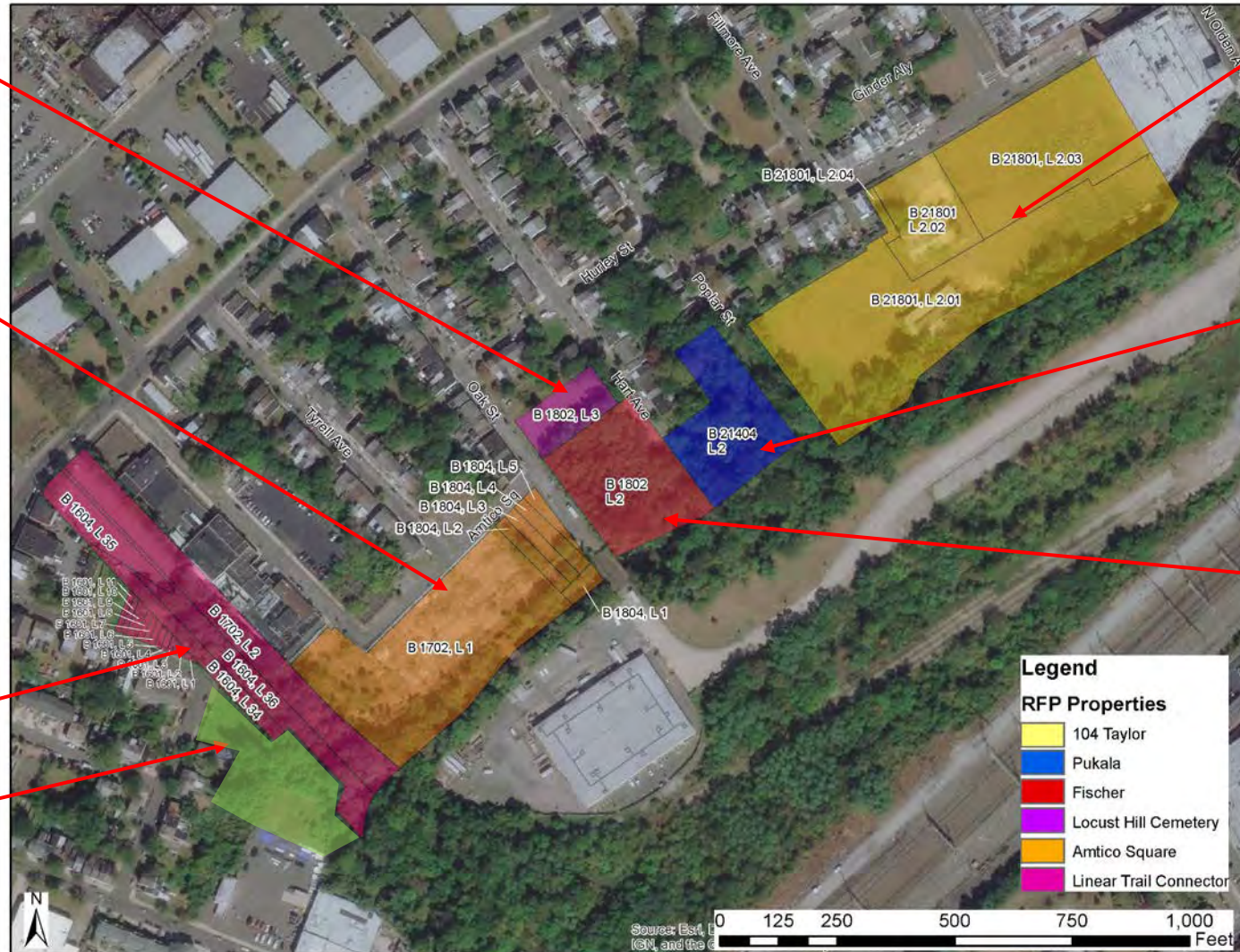
Additional testing and investigation required
for several AOC's.

1' of capping with demarcation barrier,
topsoil and vegetation anticipated; or paved
surface.

Fischer

7 AOCs- minimal testing due to potential
presence of graves

Capping may not be necessary, only deed
notice



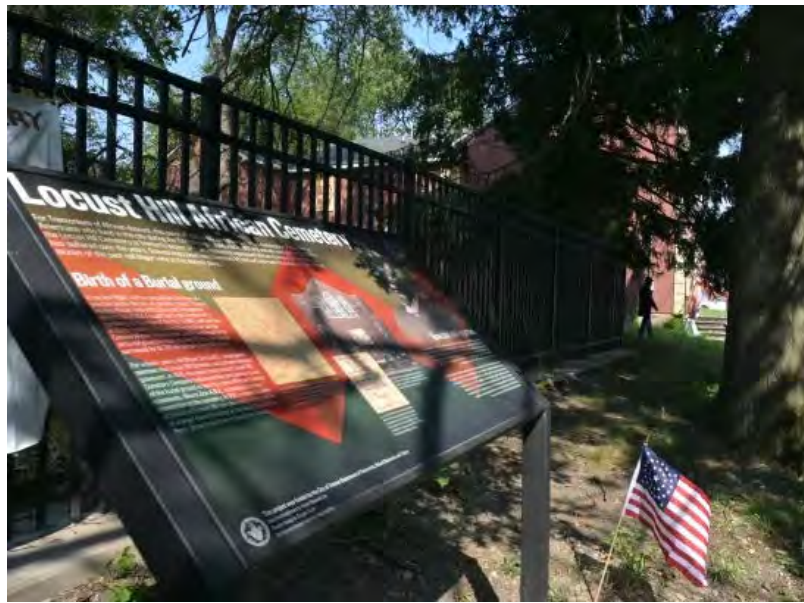
Existing Conditions- 104 Taylor Street 1



Existing Conditions- 104 Taylor Street 2



Existing Conditions- Pukala/Fischer/ Locust Hill Cemetery



Existing Conditions- Amtico Square 1



Existing Conditions- Amtico Square 2



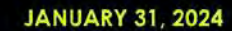
Existing Conditions- Amtico Square 3



Existing Conditions- Former R.R. ROW/ Municipal Parking Lot



TRENTON, MERCER COUNTY, NJ



OVERALL PLAN



Prepared by: **Taylor Design Group, Inc.**
Mount Laurel, New Jersey
Scott D. Taylor, IIA, ACIP, PP, LEED AP

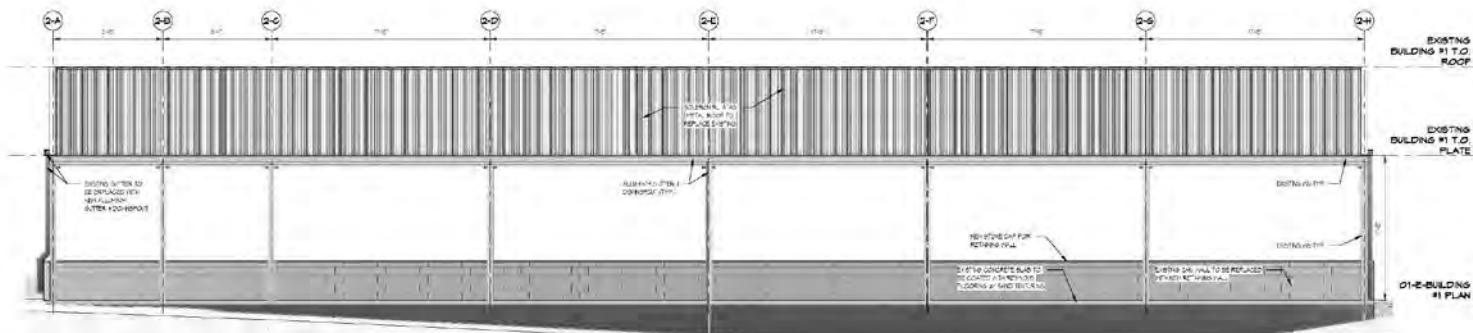
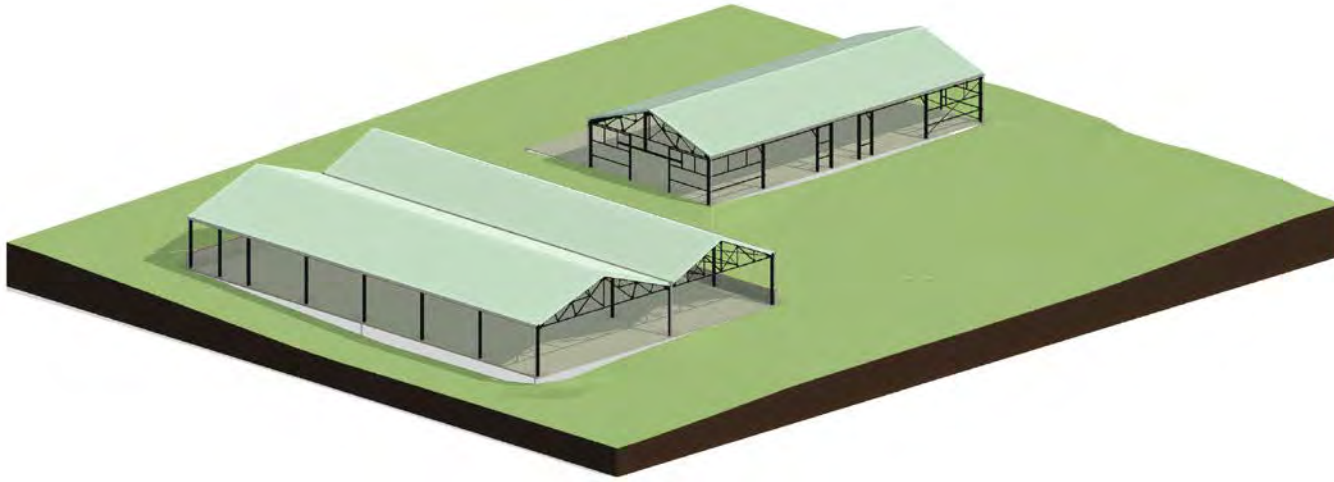


Inspirational /Design Context Images

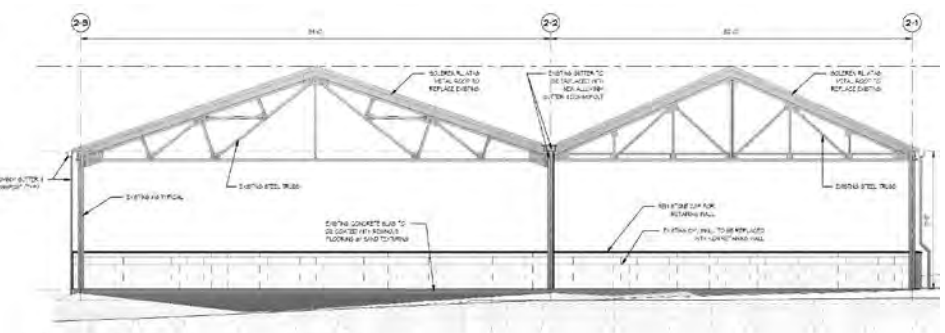
Soccer/Athletic Fields



Pavilions- Picnic area & Outdoor Gym



① PROPOSED BUILDING #1 NORTHWEST ELEVATION
1/4" = 1'-0"

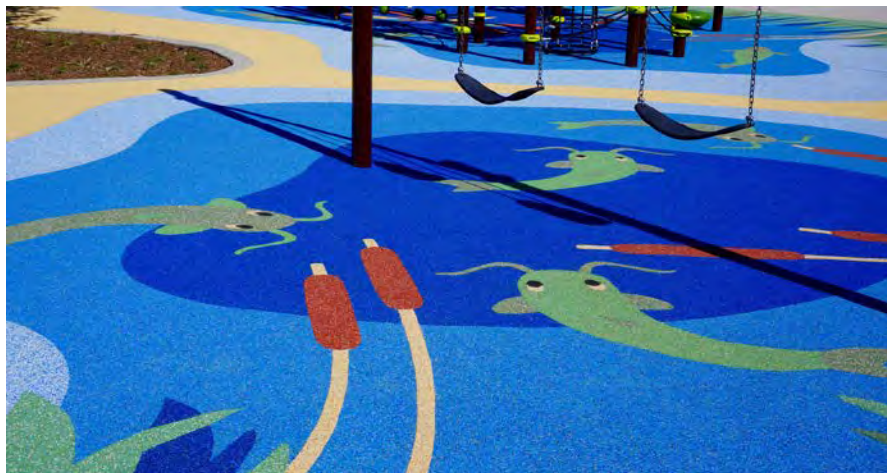


2 PROPOSED BUILDING #1 SOUTHWEST ELEVATION
1/4" = 1'-0"

Pavilions



Nature Playground



Nature Playground



Amphitheater and Lawn Area



Basketball, Futsal, Bike Polo Court



Tennis and Pickleball Court



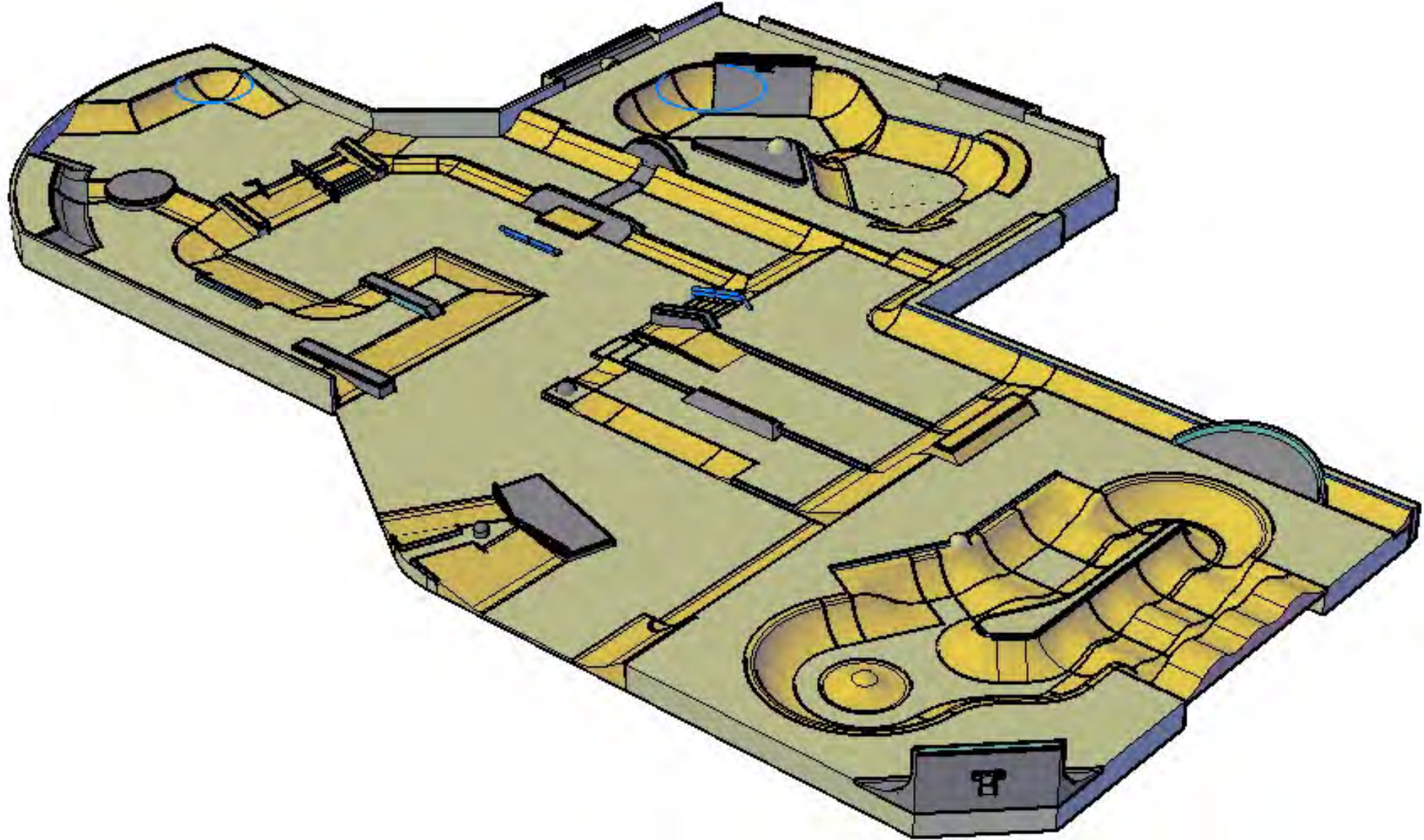
Bocce Court



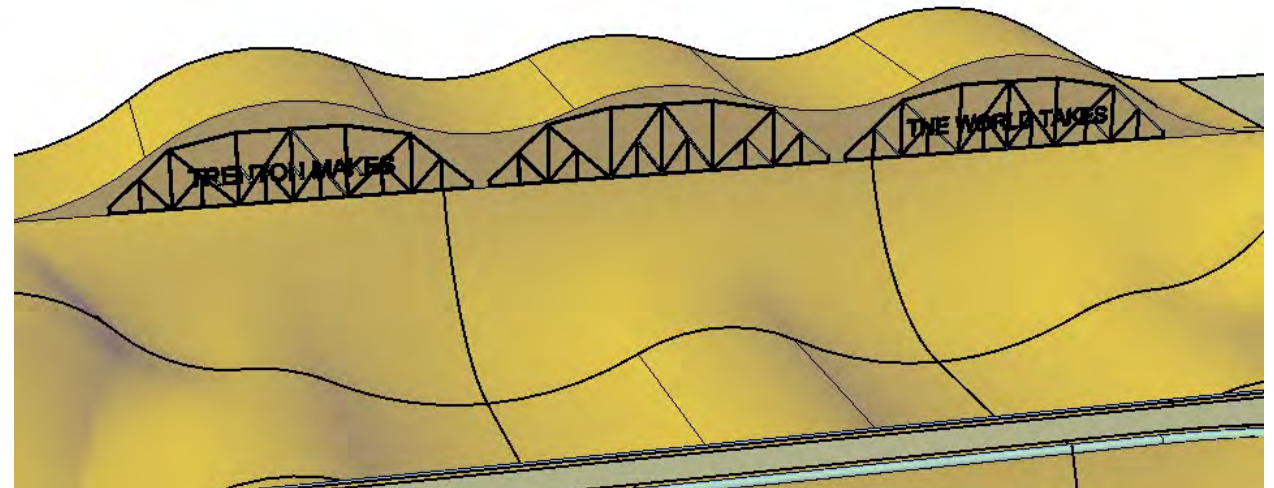
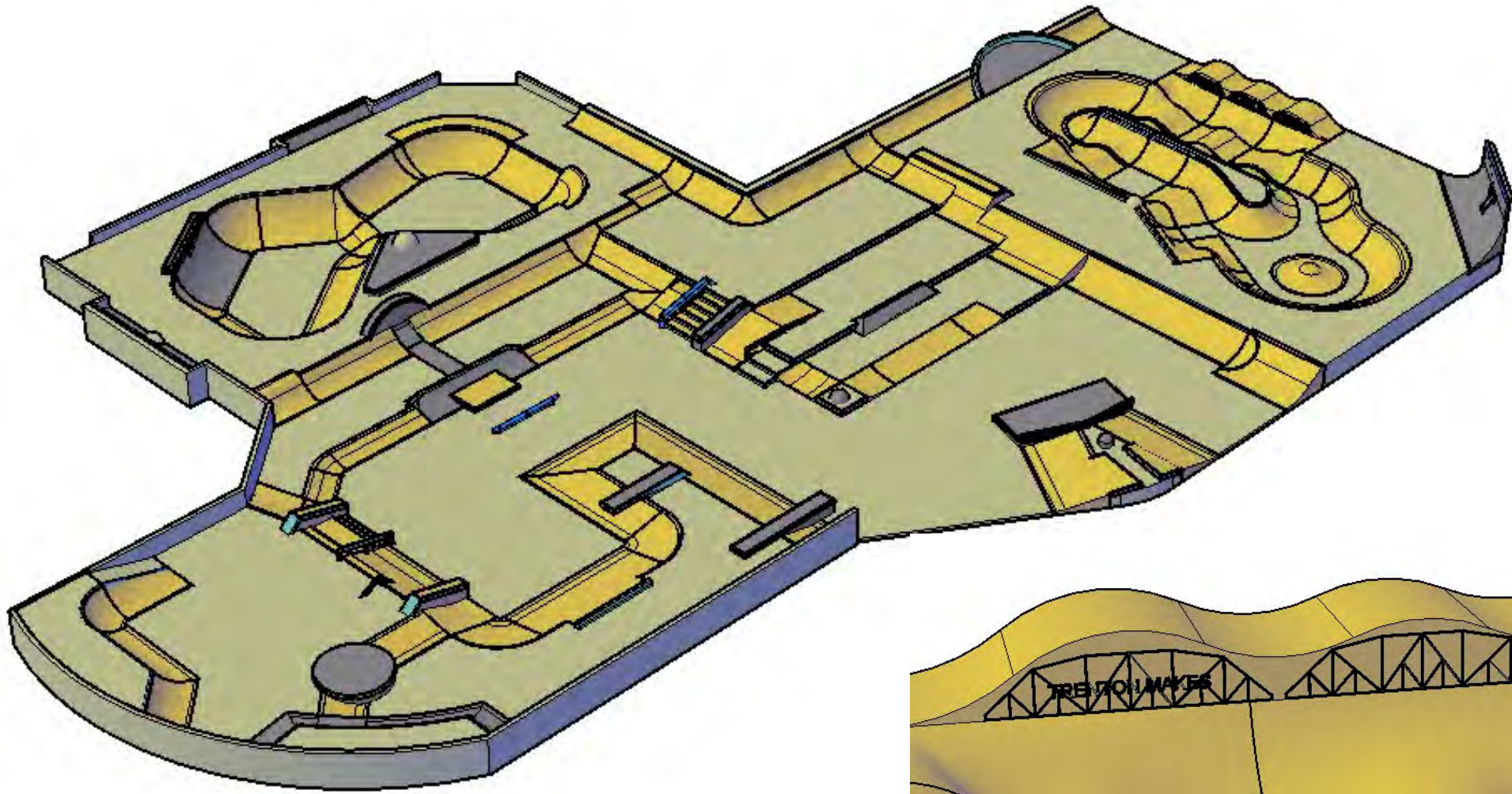
Creekside Trail and Plaza



Skatepark



Skatepark- current design



Dog Park

